



KNIT
SKILL LEVEL
INTERMEDIATE

Designed by Rebecca J. Venton



Cabled Heart Hat

These clever knit cables form hearts on a hat you'll love wearing or giving to someone special. It's perfect for Valentine's gifting or anytime you'd like to express your love.

What you will need:

RED HEART® Super Saver: 1 skein 376 Burgundy

Susan Bates® Knitting Needles: 6mm [US 10]

Cable needle, 4 stitch markers, yarn needle

GAUGE: 18 sts = 4"; 20 rows = 4" in 1x1 Rib. **CHECK YOUR GAUGE.** Use any size needles to obtain the gauge.



RED HEART® Super Saver®, Art. E300 available in solid color
7 oz (198 g), 364 yd (333 m); multicolor, heather and print 5 oz (141 g), 244 yd (223 m), flecks 5 oz (141 g), 260 yds (238 m) skeins

Hat measures 18" (45.5cm) around lower edge, unstretched, to fit 20–22" (51–56cm) head.

Special Stitches

1/1 LPC (1 over 1 left purl cross) = Slip next stitch to cable needle and hold in front, p1, then k1 from cable needle.

1/1 RPC (1 over 1 right purl cross) = Slip next stitch to cable needle and hold in back, k1, then p1 from cable needle.

2/1 LPC (2 over 1 left purl cross) = Slip next 2 stitches to cable needle and hold in front, p1, then k2 from cable needle.

2/1 RPC (2 over 1 right purl cross) = Slip next stitch to cable needle and hold in back, k2, then p1 from cable needle.

ssk = slip next two stitches as if to knit to right needle, insert point of left needle through front of sts, knit these sts together through back loop.

Notes

- Hat is worked back and forth in rows beginning at lower edge. Top of hat is shaped then side edges are sewn together for back seam.
- The cabled heart pattern can be worked by following the written instructions or reading the chart. Read right side rows of chart from right to left and wrong side rows from left to right.

HAT

Cast on 85 sts.

1x1 Rib

Row 1 (right side): K1, *p1, k1; repeat from * to end of row.

Row 2: P1, *k1, p1; repeat from * to end of row.

Repeat last 2 rows until piece measures about 4" (10cm) from beginning; end with a wrong side row.

Cabled Heart Pattern

Row 1 (right side): Knit.

Row 2: Purl.

Row 3: [K8, p1, k8] 5 times.

Row 4: [P7, k1, p1, k1, p7] 5 times.

Row 5: [K6, p1, 2/1 LPC, p1, k6] 5 times.

Row 6: [P6, k1, p3, k1, p6] 5 times.

Row 7: [K5, p1, 1/1 RPC, 2/1 LPC, p1, k5] 5 times.

Row 8: [P5, k1, p5, k1, p5] 5 times.

Row 9: [K4, p1, 2/1 RPC, p1, 2/1 LPC, p1, k4] 5 times.

Row 10: [P4, k1, p2, k3, p2, k1, p4] 5 times.

Row 11: [K3, p1, 2/1 RPC, p3, 2/1 LPC, p1, k3] 5 times.

Row 12: [P3, k1, p2, k5, p2, k1, p3] 5 times.

Row 13: [K2, p1, 2/1 RPC, p5, 2/1 LPC, p1, k2] 5 times.

Row 14: [P2, k1, p2, k3, p1, k3, p2, k1, p2] 5 times.

Row 15: [K1, p1, 2/1 RPC, p2, 2/1 LPC, p2, 2/1 LPC, p1, k1] 5 times.

Row 16: [P1, k1, p2, k3, p3, k3, p2, k1, p1] 5 times.

Row 17: [K1, p1, k2, p2, 1/1 RPC, 2/1 LPC, p2, k2, p1, k1] 5 times.

Row 18: [P1, k1, p2, k2, p5, k2, p2, k1, p1] 5 times.

Row 19: [K1, p1, 2/1 LPC, 2/1 RPC, k1, 2/1 LPC, 2/1 RPC, p1, k1] 5 times.

Row 20: [P2, k1, p11, k1, p2] 5 times.

Row 21: [K2, p1, 1/1 LPC, 1/1 RPC, k3, 1/1 LPC, 1/1 RPC, p1, k2] 5 times.

Row 22: Purl.

Row 23: Knit.

Shape Top of Hat

Row 1 (wrong side): P11, place marker, [p21, place marker] 3 times, p11.

Row 2 (decrease row): [Knit to 2 sts before next marker, ssk, slip marker, k2tog] 4 times, knit to end of row—77 sts.

Continued...

SHOP KIT



ABBREVIATIONS

k = knit; **k2tog** = knit next 2 sts together; **p** = purl; **st(s)** = stitch(es); **[]** = work directions in brackets the number of times specified; ***** = repeat whatever follows the * as indicated.

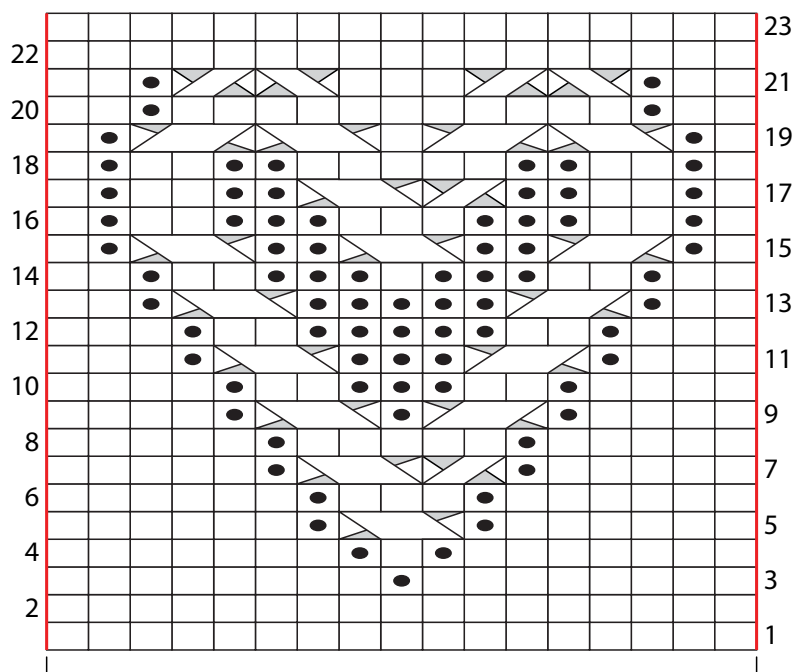
Row 3: Purl, slipping markers as you come to them.

Rows 4–15: Repeat last 2 rows 6 times—29 sts remain.

Cut yarn, leaving a long tail (about 14" (35.5cm)). Weave tail through remaining stitches and pull to gather. Secure end. Use remaining tail to sew side edges together for back seam.

FINISHING

Weave in ends.



17-st
repeat

- k on RS, p on WS
- p on RS, k on WS
- ⊠ 1/1 LPC (1 over 1 left purl cross)
- ⊡ 1/1 RPC (1 over 1 right purl cross)
- ⊟ 2/1 LPC (2 over 1 left purl cross)
- ⊞ 2/1 RPC (2 over 1 right purl cross)

